



Lifting and Tipping Stations

tipping - tilting - turning - positioning

- ✓ *INDIVIDUAL CUSTOMISATION*
- ✓ *WIDE VARIETY OF SYSTEM OPTIONS*



Multifunctional and effective

Lift and tip devices are designed for maximum functional reliability anywhere where boxes, containers, octabins, barrels, stackable containers, pallets and pallet cages are transported and then tipped and positioned at a set height. **HUMBERT & POL** offers their clients customised stations whereby nearly all bulk materials and unit loads can be discharged and arranged as required.

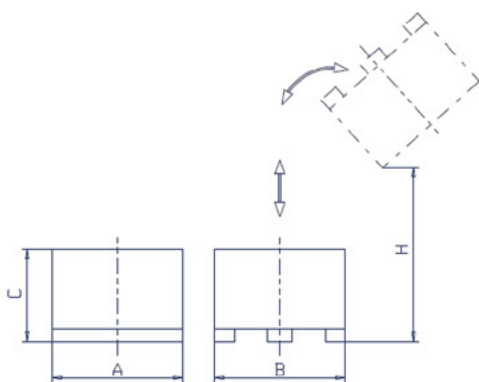


Fig. Lifting and tipping unit for pallet boxes

High performance and sturdy

HUMBERT & POL lifting and tipping stations are manufactured in high quality steel, which are always designed to the specific load capacity. Low maintenance and high quality components ensure above average working life.

Lifting and tipping heights can be adapted to existing operating procedures and conditions.

Customisation

The customised design potential of a **HUMBERT & POL**'s lifting and tipping stations, together with the almost limitless adaptability to special conveying applications and operating procedures, make installations in many industries possible.

High level of safety



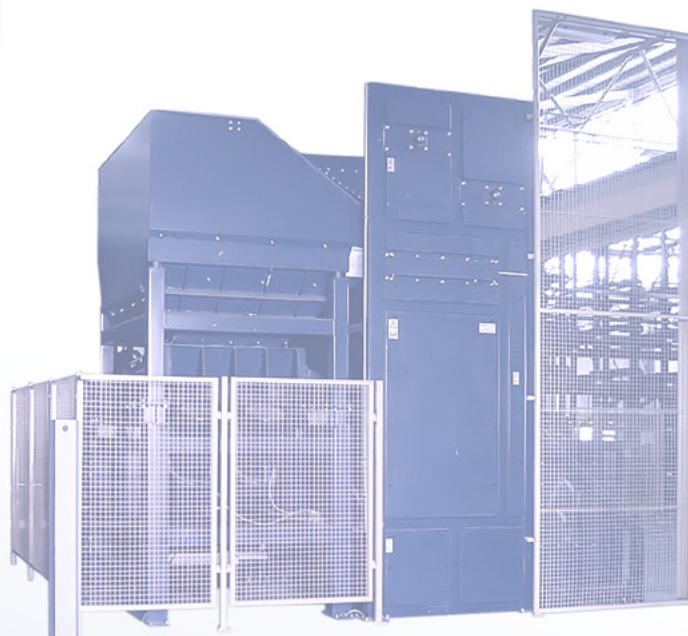
Our stations stand out for their high level of user-friendly qualities and exceptional operational safety standards. A comprehensive range of safety accessories is available, such as safety guards, mechanical or automatic opening and operating gates.



Options

Based on type of application and requirements, we also offer the following options:

- Mechanical, pneumatic or hydraulic fastening and securing of containers
- Customised enclosure by means of grating and photo-electric guards
- Access control
- Alarm indication and signals
- Chain drive systems, pneumatic or hydraulic gears



Do you have any enquiries?

Don't hesitate to contact us.

Telephone: +49 (0)5225 - 86 316 - 0

Fax: +49 (0)5225 - 86 316 - 99

info@humbertundpol.com

HUMBERT & POL

